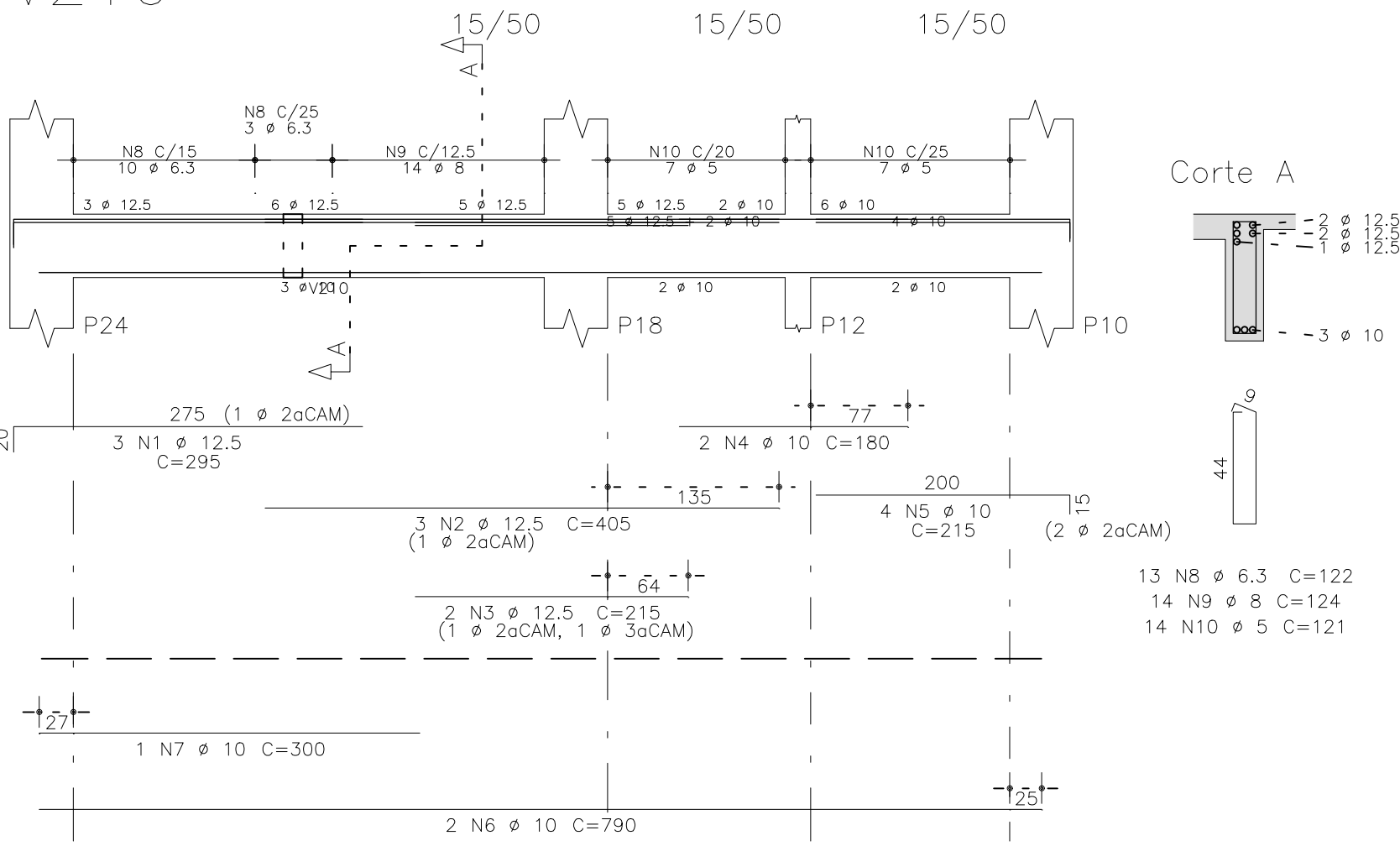
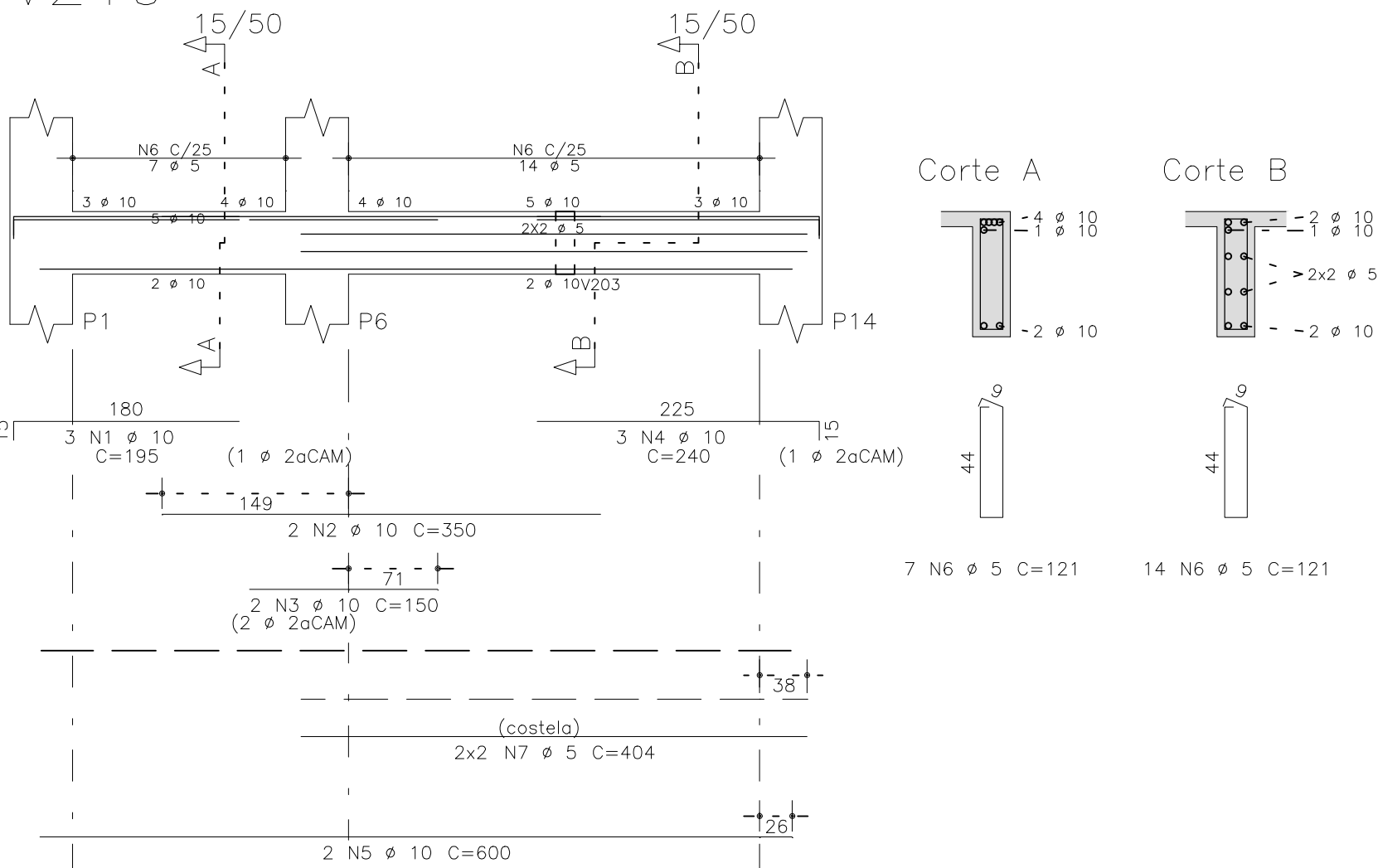


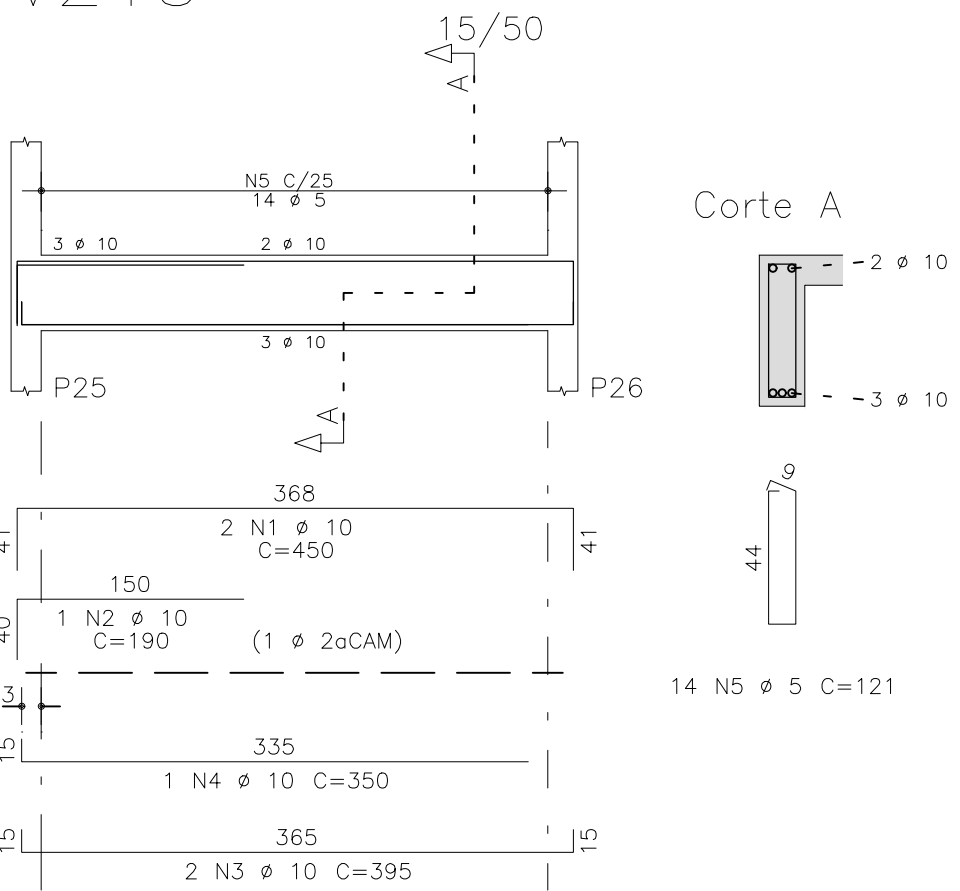
V216



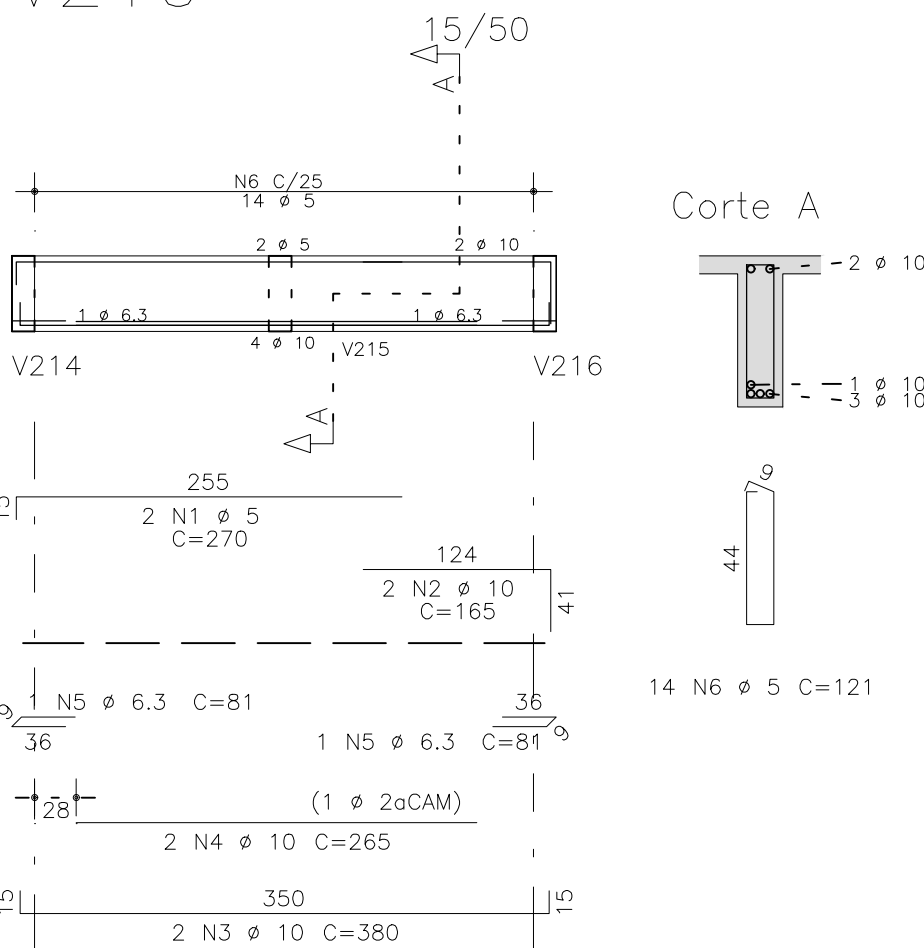
V219



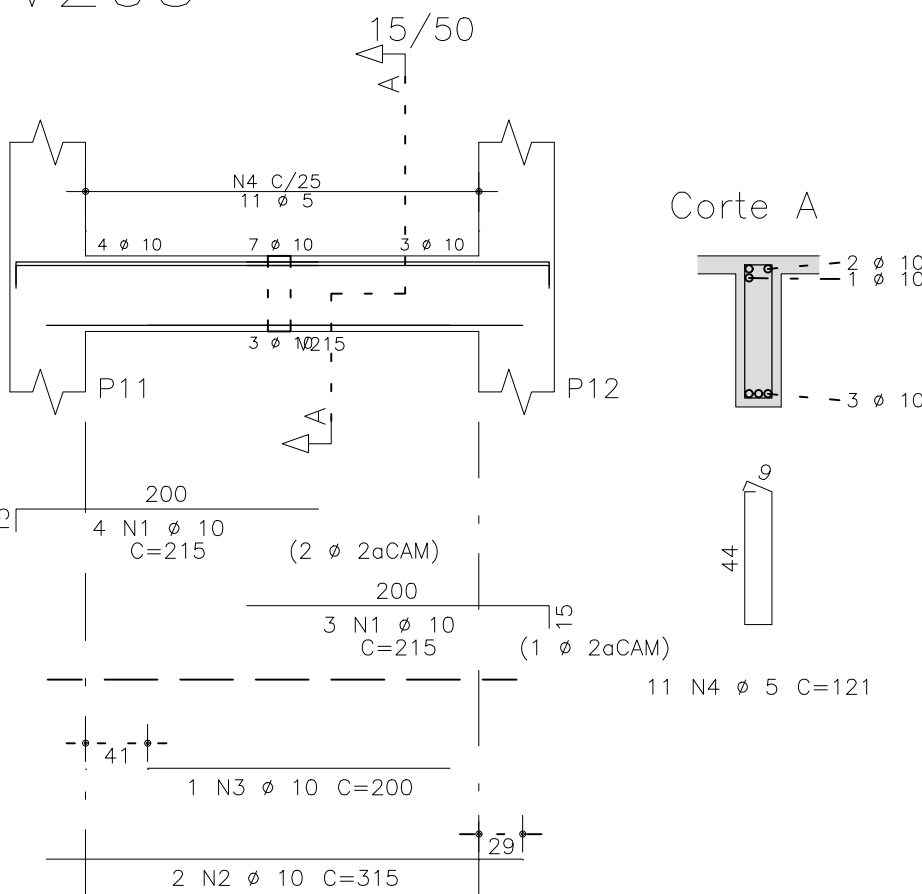
V213



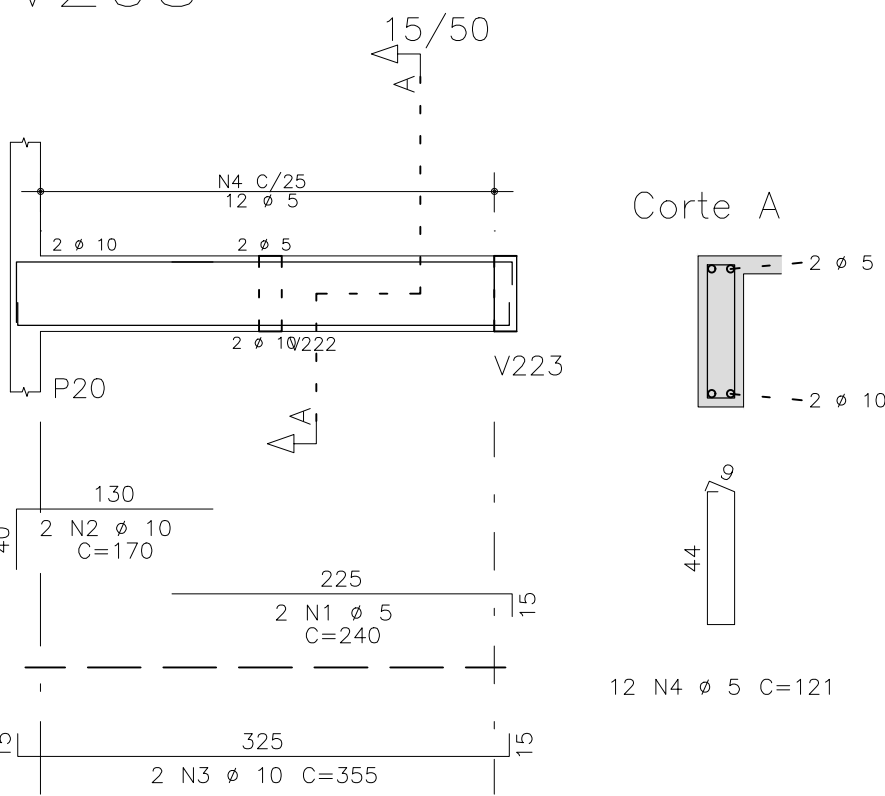
V210



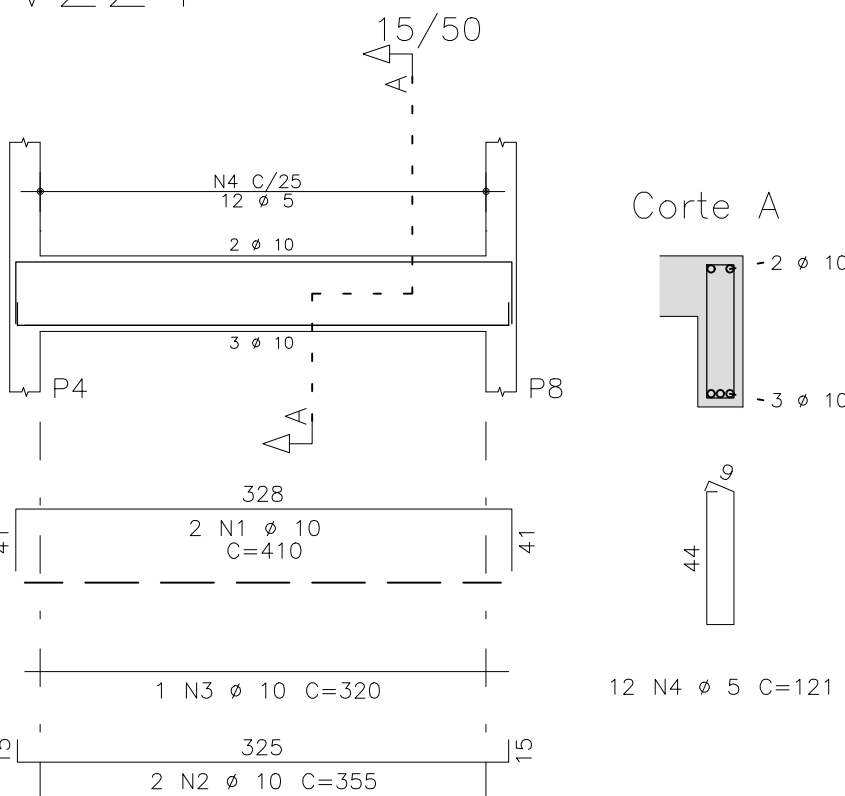
V205



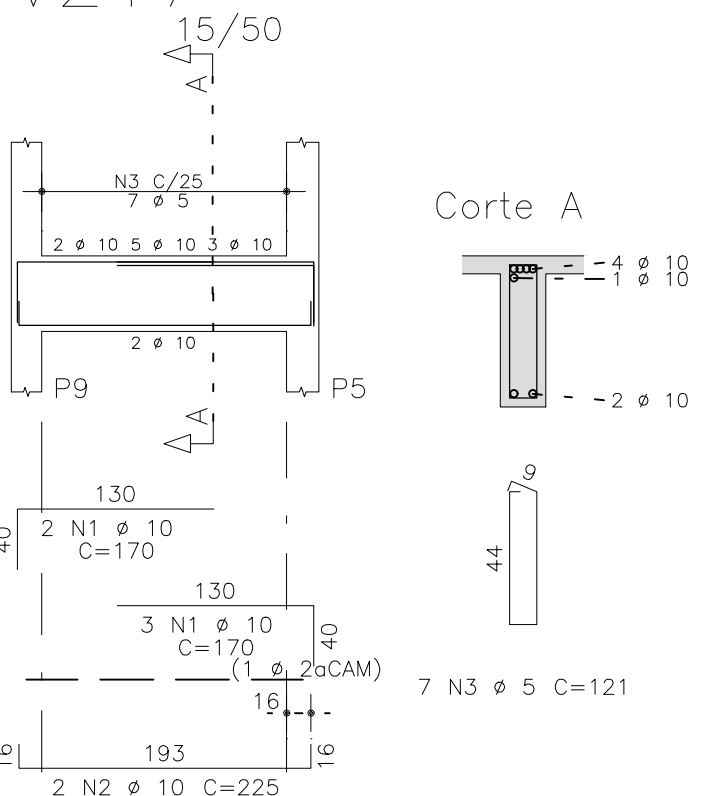
V208



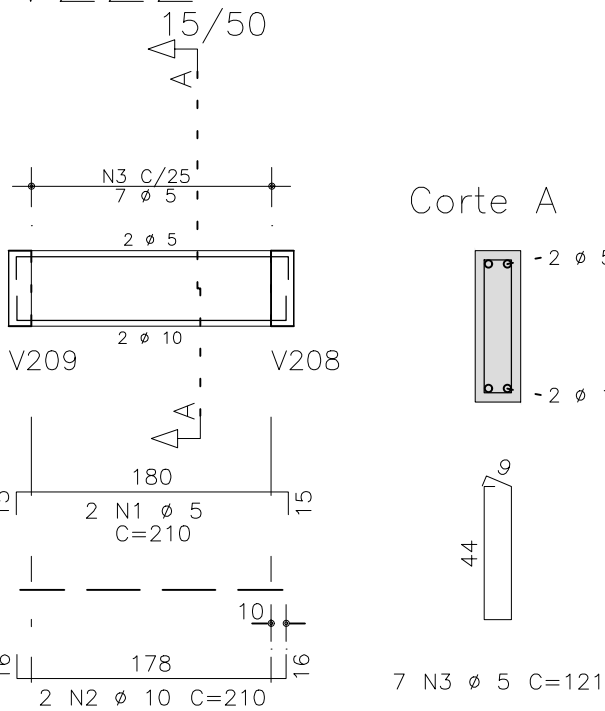
V224



V217



V222


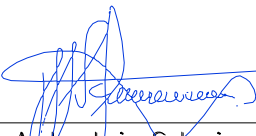


AÇO	POS	BIT (mm)	QUANT	COMPRIMENTO		
				UNIT (cm)	TOTAL (cm)	
V205						
	50A	1	10	7	215	1505
	50A	2	10	2	315	630
	50A	3	10	1	200	200
	60B	4	5	11	121	1331
V208						
	60B	1	5	2	240	480
	50A	2	10	2	170	340
	50A	3	10	2	355	710
	60B	4	5	12	121	1452
V210						
	60B	1	5	2	270	540
	50A	2	10	2	165	330
	50A	3	10	2	380	760
	50A	4	10	2	265	530
	50A	5	6.3	2	81	162
	60B	6	5	14	121	1694
V213						
	50A	1	10	2	450	900
	50A	2	10	1	190	190
	50A	3	10	2	395	790
	50A	4	10	1	350	350
	60B	5	5	14	121	1694
V216						
	50A	1	12.5	3	295	885
	50A	2	12.5	3	405	1215
	50A	3	12.5	2	215	430
	50A	4	10	2	180	360
	50A	5	10	4	215	860
	50A	6	10	2	790	1580
	50A	7	10	1	300	300
	50A	8	6.3	13	122	1586
	50A	9	8	14	124	1736
	60B	10	5	14	121	1694
V217						
	50A	1	10	5	170	850
	50A	2	10	2	225	450
	60B	3	5	7	121	847
V219						
	50A	1	10	3	195	585
	50A	2	10	2	350	700
	50A	3	10	2	150	300
	50A	4	10	3	240	720
	50A	5	10	2	600	1200
	60B	6	5	21	121	2541
	60B	7	5	4	404	1616
V222						
	60B	1	5	2	210	420
	50A	2	10	2	210	420
	60B	3	5	7	121	847
V224						
	50A	1	10	2	410	820
	50A	2	10	2	355	710
	50A	3	10	1	320	320
	60B	4	5	12	121	1452

RESUMO AÇO CA 50-60			
AÇO	BIT (mm)	COMPR (m)	PESO (kg)
60B	5	166	26
50A	6.3	17	4
50A	8	17	7
50A	10	174	107
50A	12.5	25	24
Peso Total 60B =			26 kg
Peso Total 50A =			143 kg

O acesso ao Modelo Estrutural em  
dimensão pode ser executado pelo QR CODE  
ao lado, podendo acessar via celulares,  
tablets e quaisquer outros dispositivos.



 Schuring & Schuring	<b>Schuring &amp; Schuring Ltda.</b> Escritório Técnico B.E.SCHURING – Projetos de Engenharia Av. XV de Novembro, 489 – Porto 2o. Andar – Cuiabá MT Fone:(065) 321 9959 – Fax:(065) 623 5066 – Email – schuring@terra.com.br	
PROJETO ESTRUTURAL	PROPRIETÁRIO: PREFEITURA MUNICIPAL VARZEA GRANDE	OBRA: PREVIVAG
	RESP. TEC. EXECUÇÃO:	END.: Av. Presidente Arthur Bernardes, s/n – Bairro IPASE VARZEA GRANDE MT
	AUTORES DO PROJETO:  Andre Luiz Schuring Eng.Civil – CREA 8697/D-MT	ASSUNTO: PAV SUPERIOR DET ARM VIGAS
	PECAS DETALHADAS V205 / V208 / V210 / V213 / V216 / V217 V219 / V222 / V224	FOLHA No. 16